

ELEMENT'S SUSTAINABLE VISION

HOW WE'RE STRIVING TO BE A BETTER BAR...

Element's vision for sustainability is to leave things better than how we find them. We strive towards zero waste & being carbon neutral wherever possible... Our aim is to only leave behind happy memories and a happy planet.

To do this, we source the best quality product we can from known suppliers and producers who share a similar vision. Our goal for this year is to increase our recyclable waste to 80% and to generally just become better people.

We endeavour to be as green as we can at Element and this runs through every aspect of our business. If it's not us working hard in the bars, then it's our work with our brewery Cold Town Beer where every new beer follows the Brew Blue, Go Green initiative.

We are staying away from the big companies that hate grass and think that bees are just fat wasps. Instead we'll be supporting local businesses and small batch distilleries who have a great story, a great heart and a fantastic product... All this whilst also helping boost the economy!

Team Element x

Cocktails

CLASSICS

FRENCH MARTINI

10

Absolut Blue, Chambord, pineapple juice, lime juice, aquafaba, grenadine, gomme.

PINA COLADA

10

Dead Man's Fingers Coconut Rum, Malibu, pineapple juice, milk, cream, lime juice, gomme.

OLD FASHIONED

10

Maker's Mark, brown sugar, orange bitters.

MARGARITA

10

El Jimador Blanco, Cointreau, lime juice, gomme.

MOJITO

10

Bacardi White, lime juice, gomme, mint leaves.

COSMOPOLITAN

10

Absolut Blue, Cointreau, cranberry juice, lime juice, gomme.

PORNSTAR MARTINI

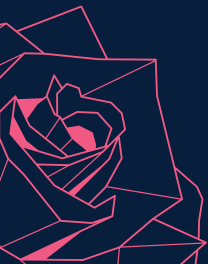
10

Absolut Vanilia, Passoa, pineapple juice, lemon, passion fruit purée, Prosecco, gomme.

ESPRESSO MARTINI

10

Absolut Blue, Kahlua, gomme, Cold Brew Coffee..



HOUSE TAILS

BLOSSOM

Roku Gin, Whitley Neill Blood Orange Vodka, gomme, lime juice, Fever-Tree Blood Orange Soda.

10



THE LUMBERJACK

Woodsman, lime juice, Fever-Tree Ginger Ale

10



JIU JITSU

Jack Daniels Apple, Havana Especial, orgeat, apple juice, lemon juice, aquafaba.

10



GLAMOUR

Edinburgh Pomegranate & Rose Gin, Cointreau, lemon juice, cranberry juice, gomme.

10



RASPBERRY CRUSH

Absolut Raspberri, Cointreau, apple juice, aquafaba.

10



DIP IT REAL GOOD

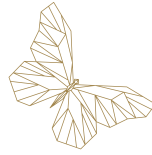
Absolut Vanilia, Kahlua, Mozart White Chocolate Liqueur, Monin Vanilla, Cold Brew Coffee.

DIP IT YOUR WAY! Choose from chocolate, Biscoff, Oreo & more!
You dip whilst we create your cocktail in front of you.

11



SPRITZ COCKTAILS



CALIFORNIAN HAZE	9.50
<i>Big Top White Zinfandel, Italicus, lemon cordial, Fever-Tree Pink Graperuit Tonic, grapefruit slice.</i>	
PINK ROSE	9.50
<i>Lillet, Barocco Prosecco, Fever-Tree Aromatic Tonic, lime.</i>	
APEROL	9.50
<i>Aperol, soda, prosecco.</i>	
RUBY SPRITZ	9.50
<i>El Bandarra Al Fresco, Fever-Tree Mediterranean Tonic, grapefruit slice & rosemary.</i>	
SUMMER DAYS	9.50
<i>Darnley's Original Gin, Fever-Tree Elderflower Tonic, mint, lime.</i>	

WINTER WARMERS

A VERY RHUBARB & GINGER WINTER (SHARER)	25
<i>Rhubarb and ginger gin, ginger wine, lemon juice, apple juice.</i>	
RASPBERRY HOT CHOCOLATE	8
<i>Raspberry gin and deluxe hot chocolate with whipped cream.</i>	
HOT APPLE	8
<i>Mulled Edinburgh Gin and hot apple juice.</i>	
MULLED WINE	7

Spirits

GIN

Element has an extensive Gin range, specialising in small batch craft gins from Scotland and further afield. Please ask your server for recommendations and our current 'In Gin'.

ELEMENT'S PERFECT SERVES

HILLS & HARBOUR GIN

MIXER *Fever-Tree Elderflower Tonic*

GARNISH *Blackberry*

50ml

9.95

ISLE OF COLL HEBRIDEAN GIN

MIXER *Fever-Tree Light Lemonade*

GARNISH *Lime & roemary*

9.95

ELECTRIC SPIRIT CO. ACHROOUS GIN

MIXER *Fever-Tree Pink Grapefruit*

GARNISH *Grapefruit*

9.95

GARDEN SHED GIN

MIXER *Fever-Tree Mediterranean Tonic*

GARNISH *Blackberry & rosemary*

9.95

BEEFEATER PEACH & RASPBERRY GIN

MIXER *Fever-Tree Light Lemonade*

GARNISH *Raspberries*

9.95

ABSOLUT PEAR VODKA

MIXER *Fever-Tree Light Ginger Ale*

GARNISH *Lemon twist*

9.95

Wine

SPARKLING

BAROCCO

PROSECCO | ITALY

Fresh, young & crisp with plenty of peachy fruit.

125ml

Btl

5.95

30

PIMP YOUR PROSECCO!

BOTTLE OF PROSECCO with EDINBURGH GIN LIQUEURS
(Elderflower & Rhubarb or Ginger) plus FRESH BERRIES

33

PIAFF NV BRUT

CHAMPAGNE | FRANCE

*Crisp notes of green apple and pear open the way,
with creamy bubbles and freshly baked pastries.*

75

BOLLINGER SPECIAL CUVÉE NV

CHAMPAGNE | FRANCE

Velvet-like bubbles with peach, brioche & walnut.

90

VEUVE CLICQUOT YELLOW LABEL

CHAMPAGNE | FRANCE

Rich, creamy, gentle bubbles. Fine, floral, toasty character.

90

ROSÉ WINE

125ml

175ml

Btl

STALLION'S LEAP

ZINFANDEL | USA

*Bright, sweet fruity freshness and delicate redcurrant
and strawberry fruits.*

4.85

6.65

27

CHATEAU ROUTAS

CINSAULT/GRENACHE/SYRAH | PROVENCE

*Freshly cut watermelon, ripe peach aromas & filled
with wild strawberries.*

5.50

7.50

32

WHISPERING ANGEL

CINSAULT/GRENACHE/GARNACHA/ROLLE | PROVENCE

A whirl of peach, zingy grapefruit & creamy strawberries.

50

WHITE WINE

	125ml	175ml	Btl
ALBA, SANTA LUZ SAUVIGNON BLANC CHILE <i>A clean, pure Sauvignon with signature lemon & mouth-watering citrus fruits.</i>	4.40	6	25
CROOKED MICK CHARDONNAY AUSTRALIA <i>Dry & fruity with rich apricot, melon & citrus notes.</i>	5.25	7	29
HENRI DE RICHEMER PICPOUL FRANCE <i>Crisp, fresh, mineral & packed full of delicious zingy citrus flavours</i>	5.25	7.25	30

RED WINE

	125ml	175ml	Btl
BEL MORO SANGIOVESE ITALY <i>Soft and smooth with morello cherry, raspberry, and delicate spicy notes.</i>	4.25	5.65	23
'LES TERRASSES', VIGNERONS ARDÉCHOIS MERLOT/SYRAH FRANCE <i>Easy-going and charming with mint, bramble & damson fruits.</i>	4.40	6	25
TOURIGA NACIONAL SYRAH/CABERNET SAUVIGNON PORTUGAL <i>Full of character, packed with fruits of the forest, plum & cherry.</i>	4.95	6.75	28
VALDEPALACIOS RIOJA JOVEN SPAIN <i>Fresh, and juicy with ripe cherry, strawberry & savoury spice to finish.</i>	5.50	7.50	31
BODEGA BARBERIS MALBEC ARGENTINA <i>Big and soft, with stacks of morello cherry, blackberry & bramble fruit.</i>	5.95	7.95	33

Draught

COLD TOWN BEER

Scottish craft beer brewed right here in Edinburgh.

	ABV	PINT	½ PINT
COLD TOWN LAGER	4.0	5.50	2.75
COLD TOWN NEIPA	5.2	5.80	2.90
COLD TOWN ROTATIONAL			

Ask your server.

REST OF THE WORLD

WEST ST MUNGO	4.9	5.50	2.75
STEWART BREWING ROTATIONAL			
MORETTI	4.6	6	3
HARVIESTOUN SCHIEHALLION	4.8	6	3
GUINNESS	5.0	5.95	3
BELHAVEN BEST	3.2	4.95	2.50
INCH'S CIDER	4.5	5.50	2.75



Bottles & Cans

COLD TOWN BEER

ABV

£

Scottish craft beer brewed right here in Edinburgh.

Ask your server for seasonal cans range.

COLD TOWN LAGER

4.0

4.8

COLD TOWN NEIPA

5.2

5

REST OF THE WORLD

PERONI

5.1

5

PERONI GLUTEN FREE

5.1

5

BUDWEISER

4.5

4.75

SOL

4.5

5

BELLFIELD CRAFT LAGER

5.2

5.10

BELLFIELD LAWLESS VILLAGE IPA

4.5

5.10

BELLFIELD PILSNER

4.5

5.10

BEAVERTOWN NECK OIL

4.3

5.75

PILOT IPAPRICOT

5.4

6.25

PILOT MOCHACCINO STOUT

5.5

6.25

PILOT PEACH MELBA SOUR

4.3

6.25

PILOT VIENNA PALE ALE

4.6

6.25

HEINEKEN 00

0.0

4.15

ERDINGER ALKOHOLFREI

0.0

4.25

REKORDERLIG

4.0

5.25

MIXED BERRIES

STRAWBERRY & LIME

REKORDERLIG ALCOHOL FREE

0.0

4.15

STRAWBERRY & LIME

Softs

MOCKTAILS

LA MER

Pineapple juice, raspberries, vanilla gomme

5

JACAMO

Apple Juice, orange juice, lime juice, blackcurrant cordial, blueberries, raspberries

6

ELDER MOJITO

Elderflower cordial, lime, gomme, apple juice, mint

6

COLD DRINKS

APPLETISER

3.15

COKE/DIET COKE

3.15

IRN BRU

2.65

DIET IRN BRU

2.65

FEVER-TREE

2.35

INDIAN TONIC | LIGHT TONIC | ELDERFLOWER TONIC

MEDITERRANEAN TONIC | RHUBARB & RASPBERRY TONIC

PINK GRAPEFRUIT SODA | MEXICAN LIME SODA

BLOOD ORANGE SODA | GINGER ALE | GINGER BEER

ONE WATER 330ML

2.50

STILL | SPARKLING

RED BULL

3.75

TROPICAL | SUGAR FREE

TEA

BREAKFAST	2.65
EARL GREY	2.65
DECAF	2.65
HERBAL TEA	2.65
PEPPERMINT CHAMOMILE BLUEBERRY JASMINE	

COFFEE

ESPRESSO / DOUBLE	2.35 / 2.65
MACCHIATO	2.65
AMERICANO	3
FLAT WHITE	3.30
CAPPUCCINO	3.50
LATTE	3.50
HOT CHOCOLATE	3.70
MOCHA	3.50

EXTRAS

EXTRA SHOT	0.40
ALTERNATIVE MILKS	0.55
ALMOND COCONUT SOY	
SYRUPS	0.25
CARAMEL CINNAMON VANILLA GINGERBREAD	
CREAM	0.55
MARSHMALLOWS	0.20

Enjoy us?

We hope you loved us!

*So much so that we want you to
Be in your Element with us more often.*

*Ask staff for more information on how
to sign up to our loyalty scheme which
offers fantastic exclusive offers
& promotions.*



STAY IN THE LOOP

*Scan to sign up to our mailing list to get
all of the latest news and offers straight
to your inbox.*



SHARE THE LOVE

*Scan to jump to Trip Advisor and tell
the world all about your experience
at Element.*

element

FACEBOOK *ElementEdinburgh*
INSTAGRAM *element_edinburgh*
TWITTER *element_ed*